



Spaces for knowledge generation.



Workshop: Designing Learning Environments for the Future



Designing Learning Environments for the Future

Thursday 21st July, 2011

Program

- 9.30am** **Registration, Coffee & Tea**
- 10.00am** **Welcome** (15 mins). Including an overview of the workshop, and setting the scene for the day ahead.
- 10.15am** **Guest Presentation** (Prof Shirley Alexander, UTS): The future of learning spaces (30 mins + 15 mins discussion). What is the future of learning spaces? Example work in this area and discussion.
- 11.00am** **Spaces for Knowledge Generation** (1 hr + 15 mins discussion): A detailed report from the Spaces for Knowledge Generation Project, including an introductory video, case studies of learning spaces, outcomes from the workshops, key findings, the learning spaces toolkit, and design/build projects that have come out of this work.
- 12.15pm** **Break for lunch**
- 1.15pm** **Activity 1: Developing a curriculum-led, human-centred design** (Dr Susan Sherringham, UTS) (45 mins) What would formal and informal collaborative learning spaces in your institution look like if you could design them from the ground up, and how do they work? Participants will work in groups around areas of interest including collaborative spaces, eddy spaces, and outdoor spaces, and make notes and drawings in a facilitated discussion. Each group will report back on their imagined spaces to the larger group (10 mins).
- 2.00pm** **Activity 2: Timescapes for learning** (Dr Kay Souter, LTU) (45 mins). Using the learning spaces you have begun to develop in Activity 1, consider what they will look like at different times of the day and night. 10am Monday. 5pm Tuesday. Midnight Wednesday. 11am Sunday. What are the logistical implications in terms of what you think the spaces are designed to afford? How would you now redesign these spaces so that they can do everything you want them to, when they are needed? (24 hr access? Security? Multiple purposes? Use out of term?)
- 2.45pm** **Bringing it all together** (15 mins) Take home messages. What would a typical day look like for a student who used each of the learning spaces we have talked about today? How might some of the design methods from the SKG Project be used in your own institutional project? Discussion.
- 3.00pm** **Close**

Facilitators

Associate Professor Kay Souter has served as Associate Dean (Academic) in the Faculty of Humanities and Social Sciences at La Trobe University since 2005, and as Acting Director of Learning and Teaching in 2007, pending the arrival of the Deputy Vice-Chancellor (Academic). She has won two internal teaching development grants, a 2007 University Citation for Outstanding Contributions to Teaching and Learning and was the lead applicant in the successful application in the Carrick Promoting Excellence Initiative. She has a special interest in social and blended learning. Kay was project leader of the ALTC *Spaces for Knowledge Generation* project and co-editor of *Physical and Virtual Learning Spaces in Higher Education*.



Matthew Riddle is an award winning Educational Designer and Senior Lecturer (Academic Development) in the Faculty of Law and Management at La Trobe University. He has been working in the field of tertiary education for over 15 years, previously as an educational researcher at the University of Cambridge, and prior to that as an Educational Designer at the University of Melbourne. Matthew worked on the *Learning Landscape Project* at Cambridge and recently won an ASCILITE research grant to repeat some of this work in an Australian context during 2008 with his project entitled ICTs in the daily lives of Australian students. Matthew was a key member of the ALTC *Spaces for Knowledge Generation* project, and co-editor of *Physical and Virtual Learning Spaces in Higher Education*.



Professor Mike Keppell is currently Director, The Flexible Learning Institute and Professor of Higher Education at Charles Sturt University, Australia. Prior to this, he worked from 2003 – 2007 at the Hong Kong Institute of Education as Associate Professor and Head of the Centre for Learning, Teaching and Technology (LTTC). Before this, he was Head of the Biomedical Multimedia Unit, Faculty of Medicine, Dentistry and Health Science, The University of Melbourne, Australia from 1998-2002 and Head of the Interactive Multimedia Unit, Division of Distance and Continuing Education, Central Queensland University, Australia from 1994-1998. He has a background in learning and teaching, curriculum, evaluation, and more specifically, instructional design. His research focuses on blended learning, learning oriented assessment, authentic learning, learning spaces and transformative learning using design based research. He is currently President of ascilite. In 2007 he edited a book through IGI Global titled *Instructional Design: Case Studies in Communities of Practice* with authors from eight different countries and is co-editor of *Physical and Virtual Learning Spaces in Higher Education*, also published by IGI Global.

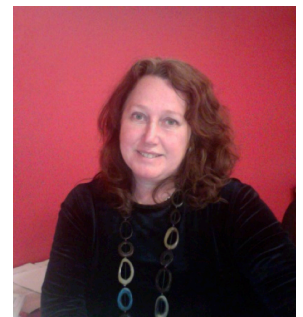


Guest Presenters

Shirley Alexander is Professor of Learning Technologies at the University of Technology, Sydney where she is currently Deputy Vice-Chancellor (Teaching, Learning & Equity). She has previously held the positions of Director of the Institute for Interactive Media and Learning, and Dean of the Faculty of Education. The University of Technology Sydney is embarking on a major campus redevelopment project which will involve close to \$1billion in expenditure and Shirley is leading the teams designing the teaching and learning, and student space projects. She is aiming to drive changes to the student experience of university through the design of spaces. She is currently a member of the Board of Trustees of the Museum of Applied Arts and Sciences (Powerhouse Museum), Chair of the TAFE NSW Higher Education Academic Board, a member of the TAFE NSW Higher Education Governing Council, and a Member of Sydney TAFE Advisory Board.



Dr Susan Sherringham is a Senior Lecturer at the University of Technology Sydney with a background in design and design education. For the past five years, Susan has been working on projects revolving around learning space improvement and the evolution of a 'sticky campus'. Her practice revolves around spatial design and design facilitation that incorporate participatory design, ethnography, practice-based inquiry and human-centred design approaches. Most recently her work has focused on developing tools, games and participatory engagements to inform new spatial affordances for next generation learning environments and testing these through pilot projects.



Venue information

Aerial Function Centre
Level 7, Building 10
(cnr Jones and Thomas St)
University of Technology, Sydney

